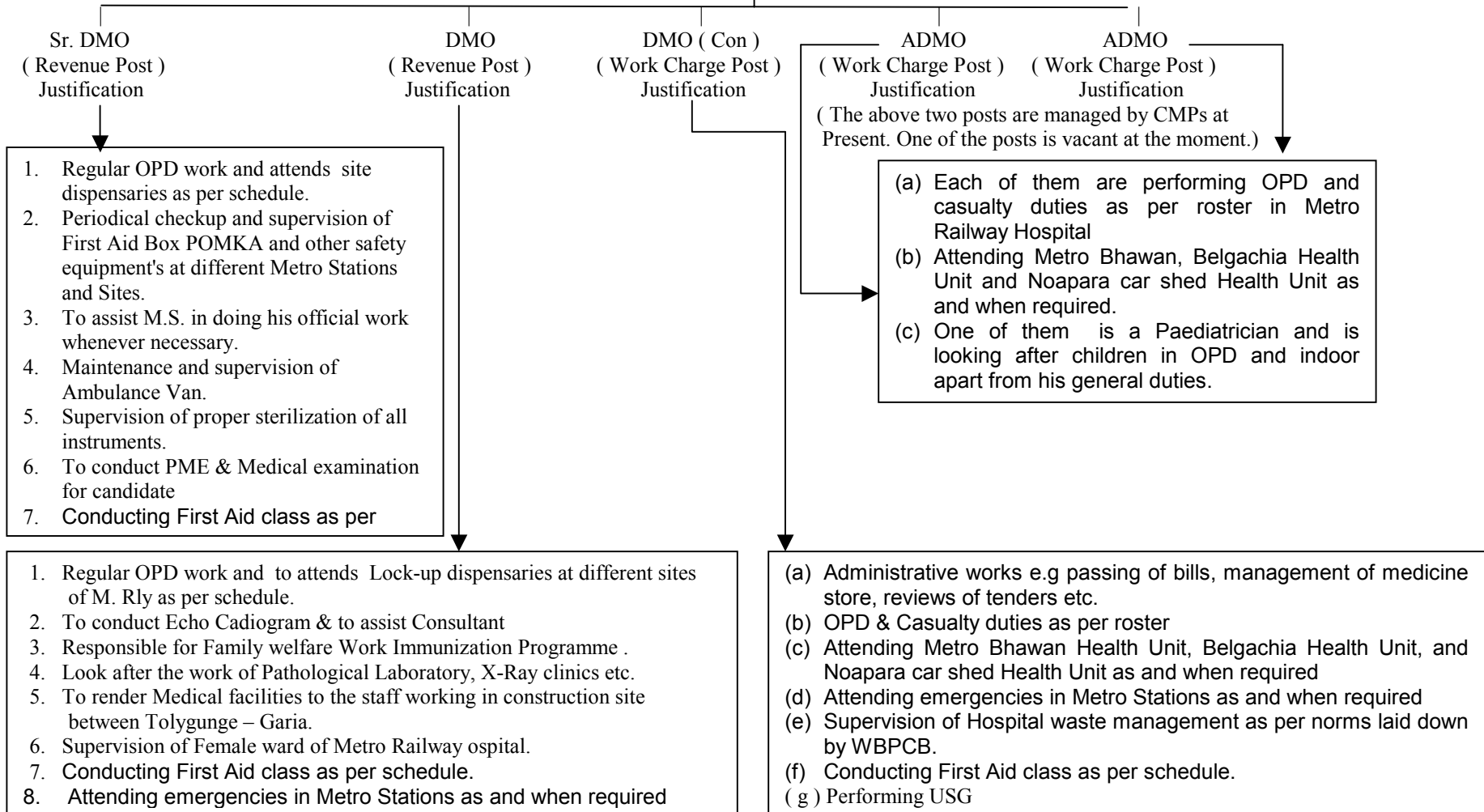


Staffing Pattern

Medical Superintendent
(Revenue Post)

Overall Supervision of Medical Department of Metro Railway, Performing administrative as well as professional duties whenever necessary



Non – Gazetted Staff

Sr.NO	Designation	Scale	Sanction		Vacancy	Remarks
			Sanction	On Roll		
1	Matron Gr - I	7450-11500	1	1		
2	Nursing Sister	5500-9000	1	1		Working against Post transferred from S.E.Rly.
3	Staff Nurse	5000-8000	4	5	1 (Excess)	1 post of SN adjusted against 1 post of Lab.Supdt – II (Sr. No 5)
4	Lab Supdt. Gr.I	6500-10500	1	1		
5	Lab Supdt. Gr.II	5000-8000	2	1	1	
6	Lab Tech.. Gr.III	4500-7000	1	0	1	
7	Radiographer	5500-9000	1	1		
8	Radiographer	4500-7000	1	0	1	
9	ECG-Tech.	4000-6000	1	0	1	
10	Dresser / OTAsstt.-Gr.I	4500-7000	2	1	1	
11	Dresser / OTAsstt.-Gr.II	4000-6000	1	0	1	
12	Dresser / OTAsstt.-Gr.III	3050-4590	3	2	1	
13	Chief Pharmacist	6500-10500	1	1		
14	Pharmacist Gr. I	5500-9000	1	1		
15	Pharmacist Gr. III	4500-7000	2	2		
16	Health Inspector	5500 - 9000	1	0	1	
17	Office Supdt. Gr.II	5500-9000		1		Drafted from GM/ Admn.
18	Head Clerk	5000-8000	2	2		
19	Sr.Clerk	4500-7000	2	1	1	
20	Jr.Clerk	3050-4590	1	0	1	
21	C.A	5500-9000	1	1		
22	Sr.Typist	4500-7000	1	1		
23	Motor Driver - I	4500-7000	2	2		
24	Motor Driver - II	4000-6000	1	1		
25	Motor Driver - III	3050-4590	1	1		
26	Store Khalasi	2550-3200	2	2		
27	Hospital Attendent	2650-4000	4	4		
28	Hospital Attendent	2610-3540				
29	Hospital Attendent	2550-3200	2	2		
30	Stretcher Bearer	2650-4000	1		1	
31	Stretcher Bearer	2550-3200	3	4	1 (Excess)	1 post adjusted against Sr. No 30
32	Jr.Record Sorter	2750-4400	1			
33	Safaiwala	2550-3200	2	2		
34	Anti-Malaria Khalasi	2550-3200	2	2		
35	B/Peon	2610-3540	1	1		
36	J/Peon	2610 - 3540		1		Drafted from Elec. Deptt.